

**SOUTHERN CALIFORNIA
CHAPTER MEETING**

THURSDAY, SEPTEMBER 29, 2022

Meeting Agenda

- 8:00 – 9:00 a.m. Registration and Continental Breakfast**
- 9:00 – 9:15 a.m. Welcome and Introductions**
- 9:15 – 10:15 a.m. Sober Living Homes – California’s Rehab Riviera, Big Dollars, Big Business and Big Litigation**
Presenters:
Sy Everett, Atty/Partner – Everett Dorey
Chris Lee, Atty/Partner – Everett Dorey
(1 MCLE – Certificate Provided)

In theory, sober living homes exist to help people struggling with addiction. But in practice, many sober living homes are unregulated and take advantage of their clients, exploit insurance carriers and damage California communities in the process. The panel speakers will discuss how these sober living homes evade regulation, break City laws, and also evaluate the City, County, State and Federal trends affecting sober living homes.



Seymour "Sy" Everett, III is a Founding Partner of Everett Dorey, LLP. Mr. Everett is a leading litigator in California and is routinely retained as trial counsel in complex and challenging cases throughout the state. He represents corporations, non-profits, cities, public agencies, special districts, school districts, police officers and individuals in all aspects of litigation. Cases include catastrophic injuries, asbestos, employment law, toxic tort, habitability, mold, general liability, wildland fires, business interference, libel, slander, environmental and administrative compliance. Mr. Everett also holds the Chartered Property Casualty Underwriting (CPCU) designation and is a regular speaker at legal seminars for fortune 500 Companies, Public Entities and Insurance Carriers and is a former adjunct professor at USC School of Law.



Christopher Lee is a Partner at Everett Dorey's Orange County office and has extensive litigation success in state and federal courts, mediations and arbitrations throughout California representing property owners, developers, businesses, insurance carriers and public entities. He has extensive experience in several complex areas of law, including professional liability, toxic tort, chemical exposure, property management, employment law, product liability, personal injury and business litigation. He received a merit scholarship and obtained his law degree from USC. He received his Bachelor of Science degree and graduated with honors, magna cum laude, from UCLA.

SOUTHERN CALIFORNIA

CHAPTER MEETING

THURSDAY, SEPTEMBER 29, 2022

10:15 – 10:30 a.m.

Break and Networking

10:30 – 11:30 a.m.

Homelessness and Workers' Compensation: What's the Connection and Impact?

Presenters:

Ken Hernandez, Los Angeles Metropolitan Transportation Authority ;

Cathy Yates, Los Angeles Metropolitan Transportation Authority

(1 CE – Certificate provided)

California's homelessness crisis has had a huge impact on society and this crisis has been worsened by the pandemic-related shutdowns and rising housing costs. LA County is front and center, having one of the largest amounts of homelessness population in the state. For most individuals on the street, the day begins early. Particularly in cold weather, many unsheltered people look for temporary relief from the elements by traveling, often by public transit. This is a growing challenge for many transit agencies and impacts transit employees and passengers who use public transit trains and buses. We welcome you to join us as we tell our story of how we manage the risks involved with this crisis; the impact it has on our Agency and our ridership; the impact it has on our employees and our claims; and how we have developed important partnerships with law enforcement, social service agencies and mental health experts to provide a positive approach to mitigate these risks!



Ken Hernandez, Deputy Chief Risk, Safety, and Asset Management Officer is an experienced Risk Management and Compliance professional with over 27 years of experience in both public and private agencies. Throughout his career, he has demonstrated continual expertise in performing high-level risk assessments, driving policy development and implementation while managing the compliance program. He oversees Metro's Risk Management functions, including General Liability, Workers' Compensation, Excess Liability, and Builders Risk; operates Metro's insurance company PTSC-MTA Risk Management Authority, maintaining compliance with the California Labor Code where applicable. He holds a Bachelor of Arts in Public Administration, Political Science from Cal Poly Pomona, and Juris Doctorate from Chapman University School of Law.



Cathy Yates is the Director of Workers' Compensation Administration for Los Angeles County Metropolitan Transportation Authority. Ms. Yates has approximately 42 years of Workers' Compensation experience. She began as a Claim Adjuster for Cambridge, Third Party Administrator, assigned to the Los Angeles Unified School District account. She stayed at Cambridge for 24 years and eventually promoted to Claims Manager overseeing the County of Los Angeles Account. From there she came to Los Angeles County Metropolitan Transportation Authority in 2004, and is still successfully leading their Workers' Compensation Administration department.

11:30 a.m. – 1:00 p.m.

Lunch and Networking

**SOUTHERN CALIFORNIA
CHAPTER MEETING
THURSDAY, SEPTEMBER 29, 2022**

Special thanks to our sponsors



Date: Sept. 29, 2022

Time: 8:00 a.m. – 1:00 p.m.

Location: The Villa

510 E Katella Ave, Orange, CA 92867

Please confirm your attendance with online registration – [Click here to Register!](#)

Public Agency Members are FREE

Associates \$25/Non-Members \$50

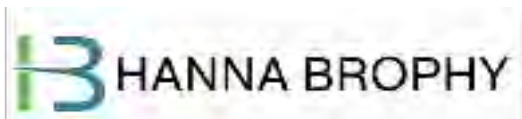
Please RSVP by September 23, 2022

**For questions, please contact DeAnna Soria, Chapter Chair at
(714)536-5519, or deanna.soria@surfcity-hb.org**

**SOUTHERN CALIFORNIA
CHAPTER MEETING
THURSDAY, SEPTEMBER 29, 2022**

Please bring your business card for an opportunity to win door prizes!

Special Thanks to our Titanium Sponsors!



We are committed to delivering strong, consistent value to members and in raising the profile of the Risk Management profession at the grassroots level!

SoCAL PARMA CHAPTER OFFICERS 2022

<p>Chair DeAnna Soria City of Huntington Beach Risk Manager 2000 Main Street • Huntington Beach, CA 92648 deanna.soria@surfcity-hb.org Ph: (714) 536-5519</p>	<p>Vice Chair Tyrone Spears City of Los Angeles Chief, Workers' Compensation Division 700 E. Temple Street #210 • Los Angeles, CA 90012 tyrone.spears@lacity.org Ph: (213) 473-3420</p>
<p>Secretary/Treasurer Candice Fisher City of Brea Sr. Human Resources Analyst 1 Civic Center Circle • Brea, CA 92821 candicef@cityofbrea.net Ph: (714) 671-4446</p>	<p>SoCAL Chapter Advisor and PARMA Board Member Paul Zeglovitch California Joint Powers Insurance Authority (CJPIA) Liability Program Manager 8081 Moody Street • La Palma, CA 90623 pzeglovitch@CJPIA.org Ph: (562) 467-8786</p>

SoCAL PARMA COMMITTEE MEMBERS

<p>Martha Espinoza ASCIP Senior Director of Risk Services espinoza@ascip.org Ph: (562) 403-4640</p>	<p>Coni Hernandez Hernandez Consulting Services Consultant • Workers' Compensation conihernandezwc@gmail.com Ph: (562) 659-2982</p>
<p>Chris Kustra Carl Warren & Company Account Executive 17862 17th Street #111, Tustin, CA 92780 ckustra@carlwarren.com Ph: (714) 572-5267</p>	<p>Brad Keenan Keenan & Associates Account Executive bkeen1@keen.com PO Box 4328 • Torrance, CA 90510 Ph: (310) 212-0363, x. 2658</p>
<p>Avic Nazario Orange County Sheriff's Dept. Professional Standards Division Human Resources Analyst avicngolez@gmail.com Ph: (310) 869-4178</p>	<p>Gene Clarke Sand Canyon Medical Group Business Development Executive g.clarke@scucmc.com Ph: (714) 613-2620</p>
<p>Juan Gonzalez LAUSD, Risk Management & Insurance Services juan.gonzalez11@lausd.net Ph: (213) 414-6100</p>	