



## Surviving a Disaster

Presented by:  
 Kerry John Whitney, Napa County Risk and Emergency Services Manager  
 Julia Ogonowski, Butte County Risk Manager  
 Janell Crane, Sonoma County Risk Manager




---

---

---

---

---

---

---

---



## Agenda

- First Things First
- Support Your Staff
- Occupational Safety and Health
- Manage Your Losses
- Plan

---

---

---

---




---

---

---

---

### Every Disaster is Different

 <p><b>Earthquakes</b>        August 24, 2014        6.1-magnitude earthquake in Napa County        1 dead, 200 injured        \$500M total damages        \$100M damages to public buildings/infrastructure        \$30.8M FEMA reimbursement to community</p>	 <p><b>Fires</b>        October 2017        Wildfire in Sonoma and Napa Counties        44 dead        145k acres burned        6,100+ homes lost</p>	 <p><b>Fires</b>        November 2018        Wildfire in Butte County        85 dead        153k acres burned        18,700+ structures burned</p>
--	--	---

---

---

---

---

---

---

---

---

## First Things First

Leverage you relationships:

- Excess Carrier (CSAC-EIA for us)
- Other entities who have experienced disasters
- Leadership

What do you need to know?

---

---

---

---

---

---

---

---

## Slow Down...

- Take time to establish priorities
- Build your team
- Don't forget a communication strategy
- Get buy-in from leadership
- Be flexible



---

---

---

---

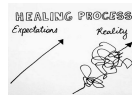
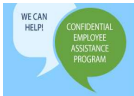
---

---

---

---

## Support Your Staff



- Employee Assistance Program
  - Consider having counselors on site at multiple locations for drop in sessions.
  - Group Critical Incident De-briefing sessions post disaster.

Do You Have Sufficient Providers with First Responder Experience in Your EAP Network?

Tap into your Behavioral Health Resources

---

---

---

---

---

---

---

---

## Occupational Safety & Health

2017 Tubbs Fire Smoke



2018 Camp Fire Smoke



---

---

---

---

---

---

---

---

## Wildfire Residuals Regulations

2017

- No regulatory standards or guidelines for testing and/or interpretation of wildfire-related residuals

2019

- Emergency regulation §5141.1

[https://www.dir.ca.gov/title8/5141\\_1.html](https://www.dir.ca.gov/title8/5141_1.html)

<https://www.dir.ca.gov/dosh/worker-health-and-safety-in-wildfire-regions.html>

---

---

---

---

---

---

---

---

## Restoration

- Project Management
- Building Access/Re-Occupancy
- Cleaning Considerations



---

---

---

---

---

---

---

---

## Manage Your Losses

### Insurance Coordination

- Assign a project manager
- Schedule regular check-ins with adjuster
- Double check authorization prior to each phase
- Track time for all aspects of project
- Develop a comprehensive property listing
  - Provides for use and occupancy
  - Identifies owned and leased details

---

---

---

---

---

---

---

---



## Where To Start?

### Planning

The organization must put on its oxygen mask first in order to provide services to the community

- Emergency Action Plans
- Continuity of Operations Plans (COOP)
- Business Resumption



---

---

---

---

---

---

---

---

## Resources

The Bay Area Urban Areas Security Initiative  
COOP/Continuity of Government Toolkit  
<http://www.bayareauasi.org/coopcog>

---

---

---

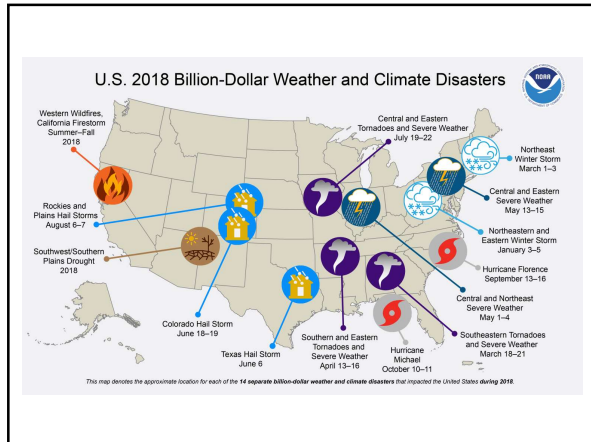
---

---

---

---

---




---

---

---

---

---

---

---

---

---

---

### Where Do We Begin?

FEMA has established 5 mission areas covering 32 core capabilities.

---

---

---

---

---

---

---

---

---

---

### New Requirements

- SB 833
- State of California Alert & Warning Guidelines, Mar 2019

---

---

---

---

---

---

---

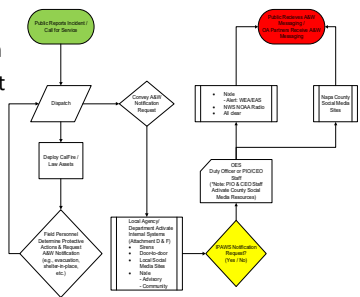
---

---

---

### Challenges

- System Activation
- Opt In vs. Opt Out
- Public Understanding
- AFN/ADA
- Situational Awareness
- PSPS



---

---

---

---

---

---

---

---

### Solutions

- Layered Systems Approach
- Hi-Lo Sirens
- Mondo Pads
- IPAWS



---

---

---

---

---

---

---

---

### Final Takeaways

- Don't wait for a disaster – Get your plans in order
- Leverage your relationships
- Slow down
- Take care of your employees
- Manage your losses

---

---

---

---

---

---

---

---



---

---

---

---

---

---

---

---